

What Child Is This 1.3 Traditional English Carol (Greensleeves) arr. David Hero

melody instrument enters solo 1st time

repeat 4x I Ia 1st x band entrance

What Child Is This

5 II

What Child Is This

10

What Child Is This

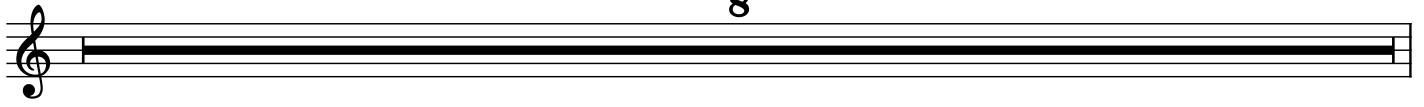
15 Ie ending

What Child Is This

20 Fine

What Child Is This

A
25 Alternate Lead on 3rd and 4th repeats (any instrument can play with melody) **8**



What Child Is This

