

# What Child Is This

Traditional English carol

English melody 16th century

Musical score for the first system of 'What Child Is This'. The score is written for six instruments: B♭ Trumpet, Alto Saxophone, Tenor Saxophone, Tenor Trombone, Baritone Horn, and Flute. The music is in 6/8 time and B-flat major. The first system consists of six measures of music.

Musical score for the second system of 'What Child Is This'. The score is written for six instruments: B♭ Tpt., A. Sax., T. Sax., T. Tbn., Bar. Hn., and Fl. The music is in 6/8 time and B-flat major. The second system begins with a measure rest (marked '6') and consists of six measures of music.

B $\flat$  Tpt.

A. Sax.

T. Sax.

T. Tbn.

Bar. Hn.

Fl.

The musical score for page 13 features six staves, each representing a different instrument. The instruments are B $\flat$  Trumpet, Alto Saxophone, Tenor Saxophone, Tenor Trombone, Baritone Horn, and Flute. The notation includes various note values, rests, and accidentals (sharps and flats) across four measures. The B $\flat$  Tpt. and Bar. Hn. staves use a treble clef with a key signature of one flat. The T. Tbn. staff uses a bass clef with a key signature of two flats. The A. Sax., T. Sax., and Fl. staves use a treble clef with a key signature of two flats. The music concludes with a double bar line at the end of the fourth measure.

# B♭ Trumpet

# What Child Is This

Traditional English carol

English melody 16th century

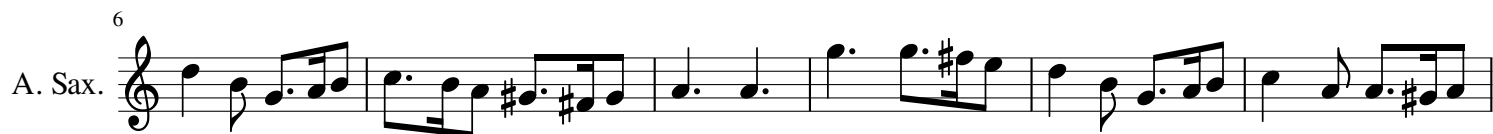


# Alto Saxophone

# What Child Is This

Traditional English carol

English melody 16th century



# Tenor Saxophone

# What Child Is This

Traditional English carol

English melody 16th century

Tenor Saxophone 

Musical notation for Tenor Saxophone, measures 1-5. The staff is in treble clef with a key signature of one flat (Bb) and a 6/8 time signature. The melody begins with a quarter rest, followed by a quarter note Bb, and continues with eighth and sixteenth notes.

T. Sax. <sup>6</sup> 

Musical notation for Tenor Saxophone, measures 6-11. The staff continues the melody from measure 5, starting with a quarter note Bb and ending with a quarter note Bb.

T. Sax. <sup>12</sup> 

Musical notation for Tenor Saxophone, measures 12-16. The staff continues the melody from measure 11, starting with a quarter note Bb and ending with a double bar line.

# Tenor Trombone

# What Child Is This

Traditional English carol

English melody 16th century

Tenor Trombone

Musical notation for Tenor Trombone, measures 1-5. The staff is in bass clef with a key signature of two flats (B-flat and E-flat) and a 6/8 time signature. The melody consists of eighth and quarter notes.

6

T. Tbn.

Musical notation for Tenor Trombone, measures 6-11. The staff is in bass clef with a key signature of two flats and a 6/8 time signature. The melody continues with eighth and quarter notes.

12

T. Tbn.

Musical notation for Tenor Trombone, measures 12-16. The staff is in bass clef with a key signature of two flats and a 6/8 time signature. The melody concludes with a double bar line.

# Baritone Horn (Treble Clef) ~~What~~ Child Is This

Traditional English carol

English melody 16th century

