

Sesame Street Theme

arr kirk israel for jp honk

Section 1 (after bassline lead in)

Musical score for Section 1 (after bassline lead in) for Bb Trumpet, Alto Saxophone, Trombone, and Tuba. The score is in 4/4 time and features a key signature of one flat (Bb). The Bb Trumpet part starts with a quarter rest, followed by a half note G4, a quarter note A4, and a quarter note Bb4. The Alto Saxophone part starts with a quarter rest, followed by a half note G4, a quarter note A4, and a quarter note Bb4. The Trombone part starts with a quarter rest, followed by a half note G4, a quarter note A4, and a quarter note Bb4. The Tuba part starts with a quarter rest, followed by a half note G4, a quarter note A4, and a quarter note Bb4. The score continues with similar patterns for the first two measures.

Musical score for Section 1 (after bassline lead in) for Bb Tpt., A. Sax., Tbn., and Tba. starting at measure 5. The score is in 4/4 time and features a key signature of one flat (Bb). The Bb Tpt. part starts with a quarter rest, followed by a half note G4, a quarter note A4, and a quarter note Bb4. The A. Sax. part starts with a quarter rest, followed by a half note G4, a quarter note A4, and a quarter note Bb4. The Tbn. part starts with a quarter rest, followed by a half note G4, a quarter note A4, and a quarter note Bb4. The Tba. part starts with a quarter rest, followed by a half note G4, a quarter note A4, and a quarter note Bb4. The score continues with similar patterns for the first two measures.

Section 2 (Funky Chi

11

B \flat Tpt.

A. Sax.

Tbn.

Tba.

16

B \flat Tpt.

A. Sax.

Tbn.

Tba.

Alto Saxophone

Sesame Street Theme

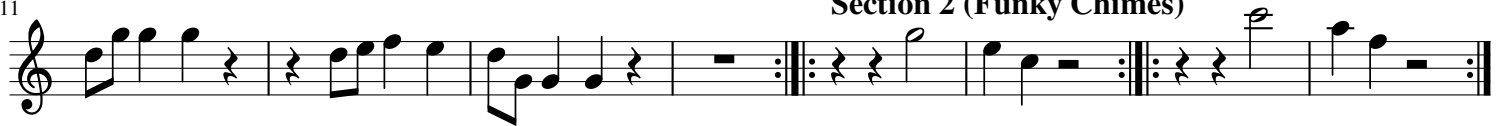
arr kirk israel for jp honk

Section 1 (after bassline lead in)



11

Section 2 (Funky Chimes)



Trombone

Sesame Street Theme

arr kirk israel for jp honk

Section 1 (after bassline lead in)



Section 2 (Funky Chimes)

10

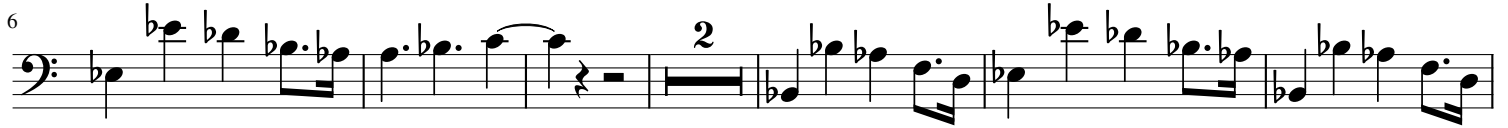


Tuba

Sesame Street Theme

arr kirk israel for jp honk

Section 1 (after bassline lead in)



Section 2 (Funky Chimes)

