

Johnny B. Goode (concert Bb version)- Bass instrm.

Chuck Berry

Intro

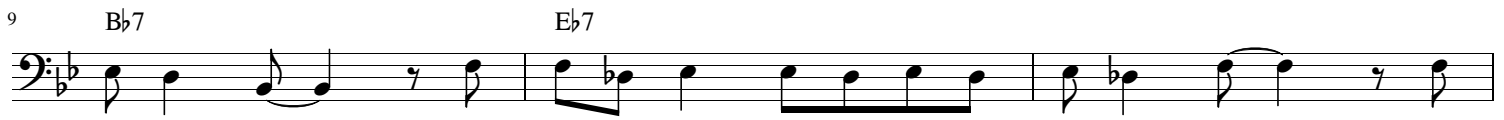


Deep

Verse Bb



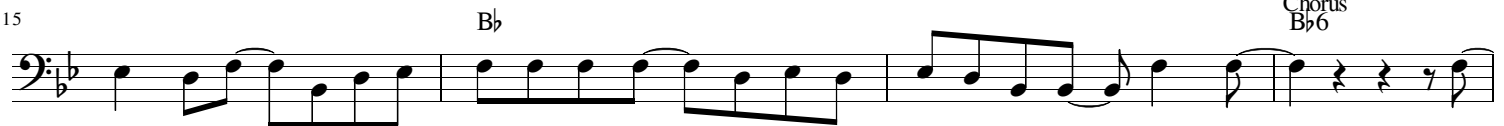
down in Lou 'si an a, close to New Or leans, 'Way back up in the woods a mong the
car ry his gu tar in a gun ny sack, Go sit be neath the tree by the
moth er told him, "some day you will be a man and you will be a lead er of a



ev er greens; There stood an old cab in made of earth and wood, Where
rail road track; 'Ol en gineer in the train sit tin' in the shade,
big old band. Man y peo ple com in' from miles a round, to



lived a coun try boy nam ed JOHN NY B. GOODE Who'd nev er ev er learned to read or
strum min' with the rhy thm that the driv ers made The peo ple pass in' by they would
hear you play your music till the sun goes down. May be some day your name 'il be in



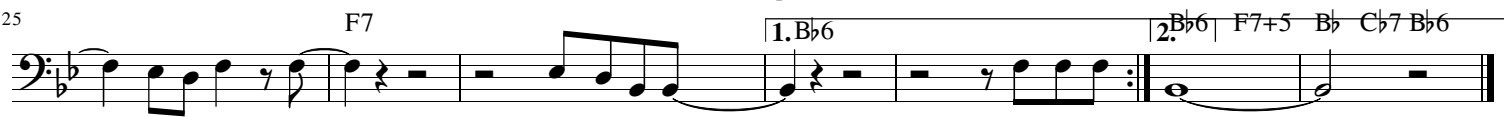
write so well But he could playGo!a gui tar just like a ring 'ng a bell. Go! Go! Go!
stop and say, A say in' JOHN NY B. GOODE to boy could play
lights night"

Chorus Bb6



John ny! Go! Go! John ny! Go! Go! Go! John ny! Go! Go! Go!

Repeat three times



John ny! go! Go! JOHNNY B. GOODE. 1. Bb6 2. He used to 3. His