

Its the Most Wonderful Time

♩ = 180

Piano

B♭ Trumpet

Alto Saxophone

Trombone

This system contains the first four staves of the musical score. The Piano part is in treble clef, 3/4 time, with a key signature of one sharp (F#). The B♭ Trumpet part is in treble clef, 3/4 time, with a key signature of two sharps (D#). The Alto Saxophone part is in treble clef, 3/4 time, with a key signature of two sharps (D#). The Trombone part is in bass clef, 3/4 time, with a key signature of two sharps (D#). The music begins with a repeat sign and a first ending bracket. The tempo is marked as quarter note equals 180.

13

Pno.

B♭ Tpt.

A. Sax.

Tbn.

1.

2.

This system contains the next four staves of the musical score, starting at measure 13. The Piano part is in treble clef, 3/4 time, with a key signature of one sharp (F#). The B♭ Trumpet part is in treble clef, 3/4 time, with a key signature of two sharps (D#). The Alto Saxophone part is in treble clef, 3/4 time, with a key signature of two sharps (D#). The Trombone part is in bass clef, 3/4 time, with a key signature of two sharps (D#). The music continues with a first ending bracket and a second ending bracket. The tempo is marked as quarter note equals 180.

27

Pno.

B♭ Tpt.

A. Sax.

Tbn.

40

Pno.

B♭ Tpt.

A. Sax.

Tbn.

3.

52

Pno.

B♭ Tpt.

A. Sax.

Tbn.

Piano

Its the Most Wonderful Time

$\text{♩} = 180$



16



32



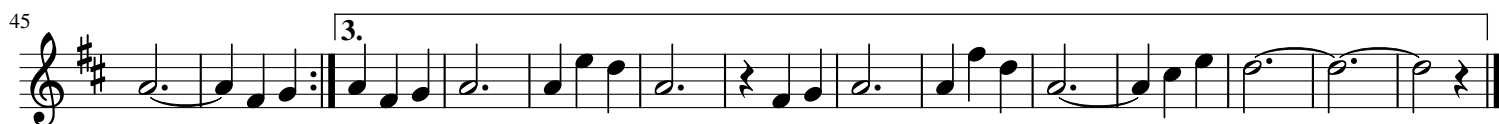
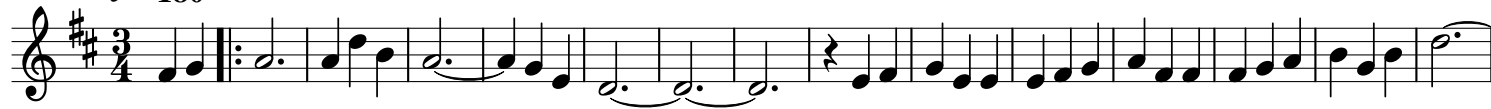
45



B \flat Trumpet

Its the Most Wonderful Time

$\text{♩} = 180$

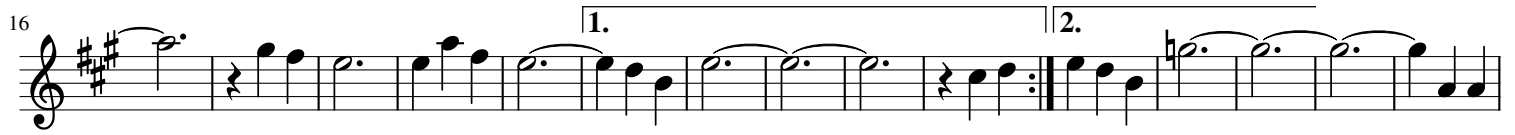


Alto Saxophone Its the Most Wonderful Time

♩ = 180



16



31



44



58



Trombone

Its the Most Wonderful Time

♩ = 180

