

Which Side Are You On?

New Orleans 2nd Line-Style

Alto Sax

Florence Reese, 1931

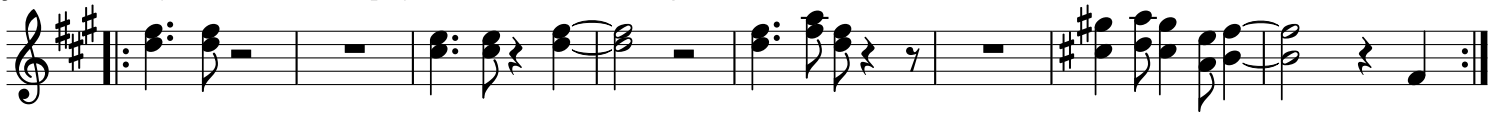
Intro Verse Chorus Bridge, I. V. C. B., C. C. B. I. (low brass only on last intro)

Intro

Intro bass riff, play only if not enough bass
4x at top, 2x when return



Intro hits,
Play once bass riff has played 4x (2x when returning)



Don't

Verse



scab - for the bos - ses, don't lis - ten to their lies! Us



poor folks hav - en't got a chance un - less we or - gan - ize!

Chorus



Which side are you on? Which side are you on?



Which side are you on? Which side are you on?

Bridge

